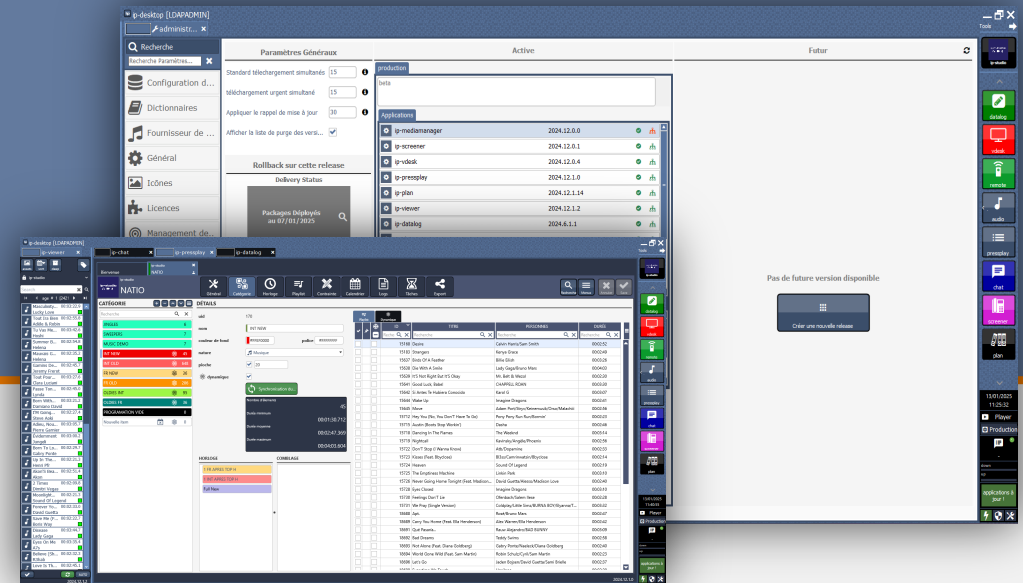
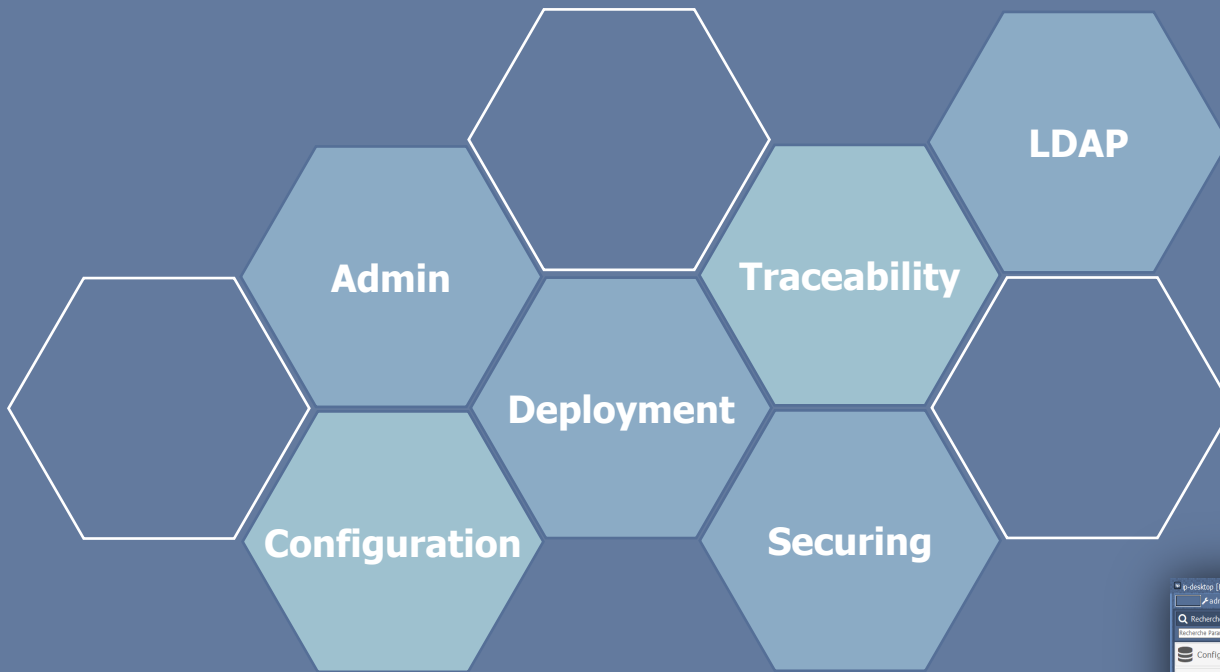


ip-desktop

Centralized software business tool

Manage user rights
Administers infrastructures
Manage deployments and versions



ip-desktop

Centralized software business tool



USER MANAGEMENT



TRACEABILITY



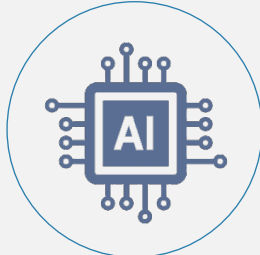
SYSTEM CONFIGURATION



VERSION MANAGEMENT



SAFETY MANAGEMENT



AI

ip-desktop

Centralized software business tool

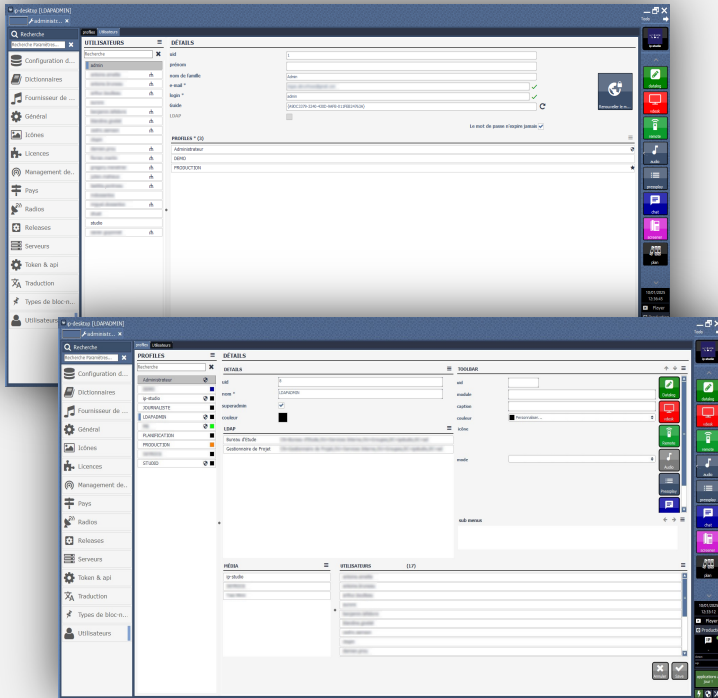


USER MANAGEMENT

The ip-desktop module manages user rights for each profile in the solution. By managing access to content, applications and actions, you can grant or restrict the access required by an administrator, producer or user.

In “super administrator” mode, you can administer the ip-suite solution for an identified population.

User authentication is LDAP-compatible.



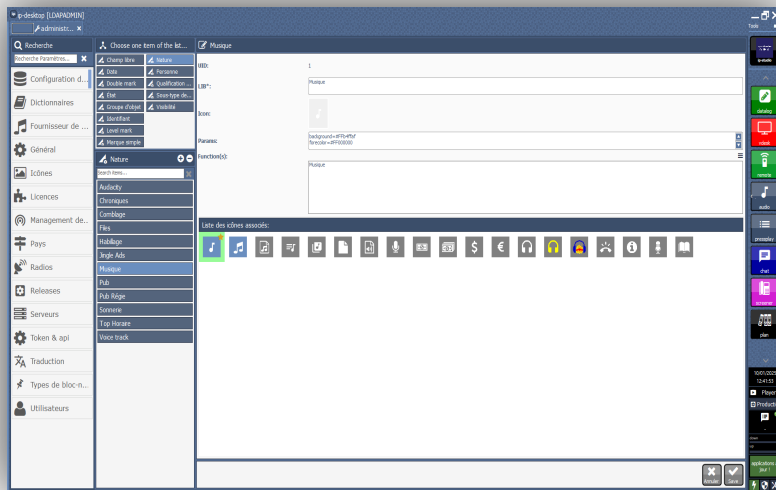
ip-desktop

Centralized software business tool



SYSTEM CONFIGURATION

Ip-desktop lets you customize your ip-suite solution with a wide range of possible configurations, including LDAP, trademarks, transmitters, databases and storage.



ip-desktop

Centralized software business tool



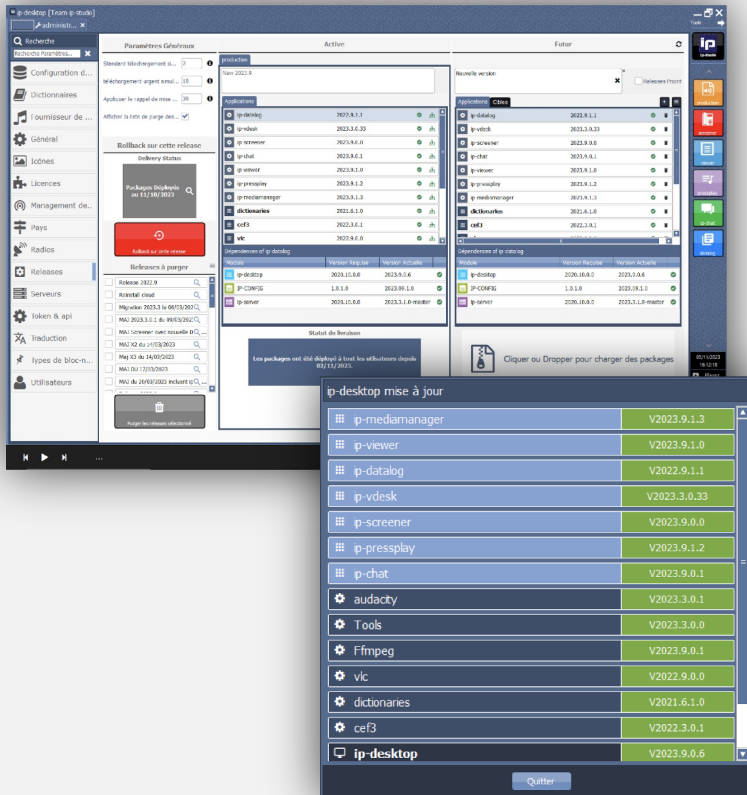
VERSION MANGEMENT

With ip-desktop, you're guaranteed efficient management of update packages. Updates can be deployed either partially or globally.

Access to scheduling means you can stay informed at all times and manage new version updates with precision..

LICENSE MANAGEMENT

Ip-desktop manages licenses and subscriptions.



ip-desktop

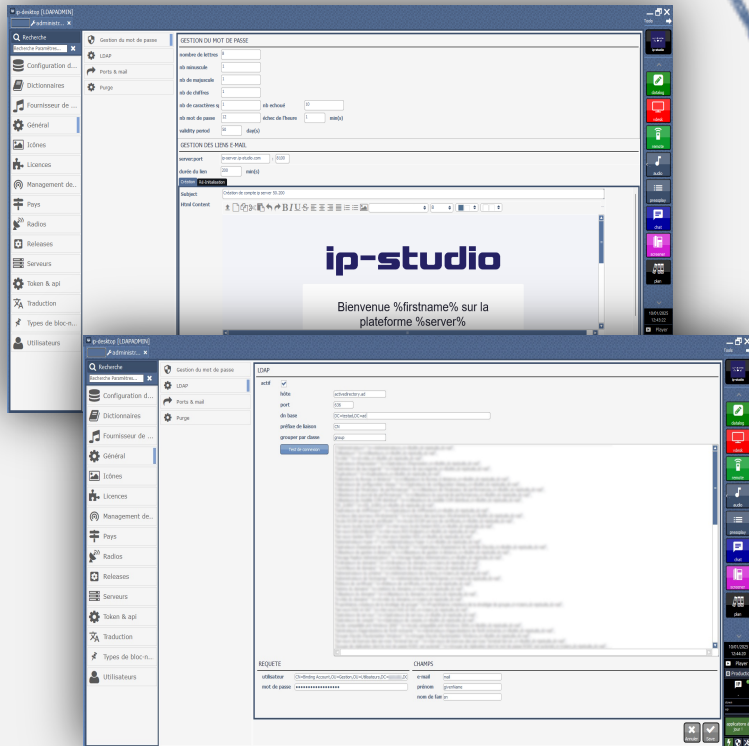
Centralized software business tool



SAFETY MANAGEMENT

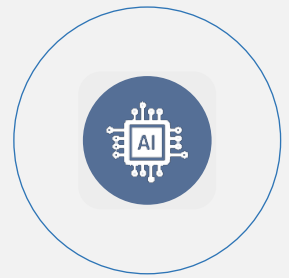
This solution meets authenticated security standards with ISO 27001 and RGPD certifications.

It also holds the Code Signing Certificate and respects HTTP protocols to ensure absolute security.



ip-desktop

Centralized software business tool



AI

The ip-desktop module lets you declare and configure subscriptions to outsourced IA services.

The available AI options are :

- SpeechToText - Sound-to-text conversion
- Generative AI - VoiceML audio generation

