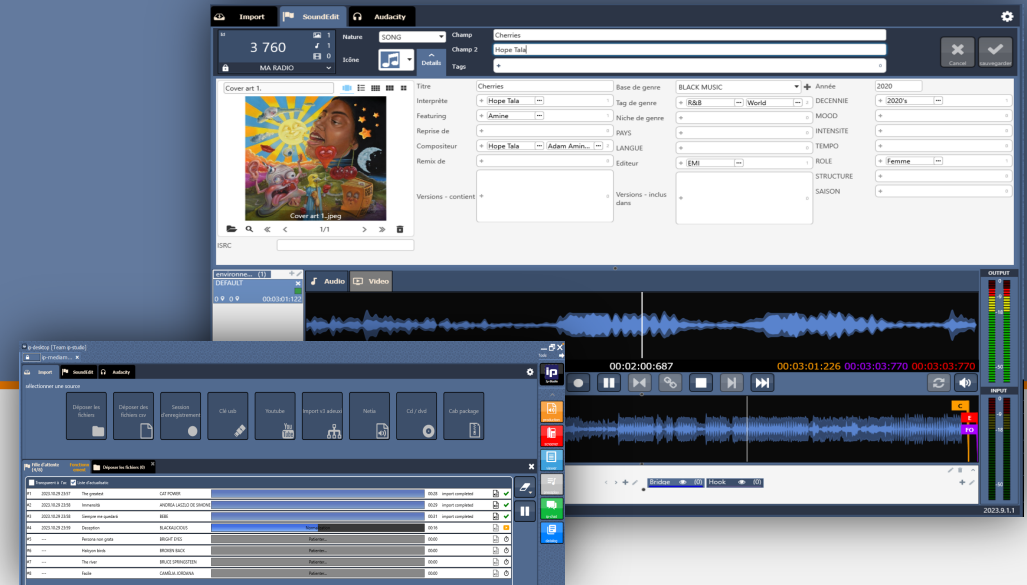


# ip-mediamanager

Centralized software business tool

Digitizes and normalize content  
Key highlights editing  
Multitrack editing



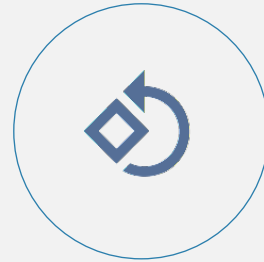
**ip-studio**  
www.ip-studio.com

# ip-mediamanager

Centralized software business tool



INGEST  
AUDIO & VIDEO



KEY HIGHLIGHTS



NORMALIZATION



INSERT SIP



PRODUCTION

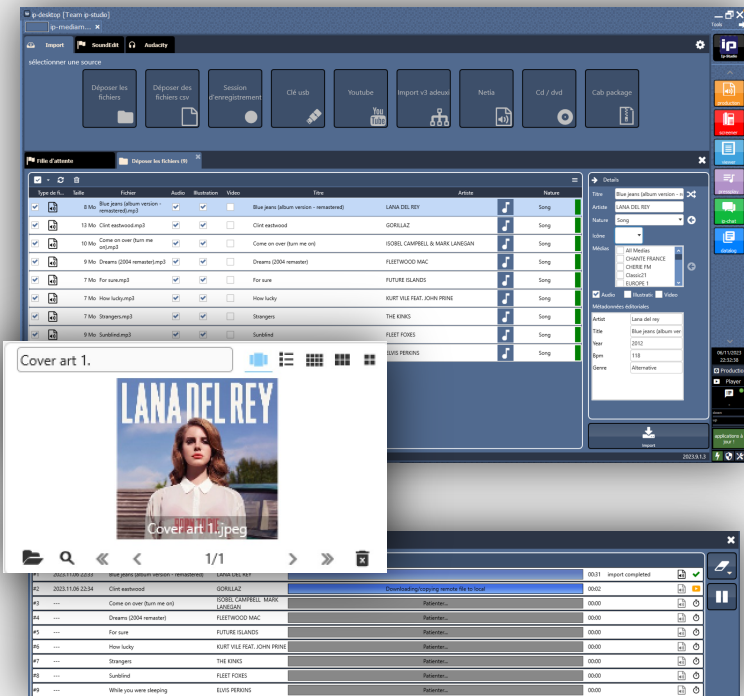


## INGEST AUDIO & VIDEO

Single or batch import and export of audio and video files offers a multitude of aggregations, such as metadata retrieval of illustrations (via Spotify, Deezer, etc.), saving considerable time.

Adding console functions to ingest makes it easier for users to manage their recordings via a single interface.

The signature ensures all necessary conversions to the target broadcast format.

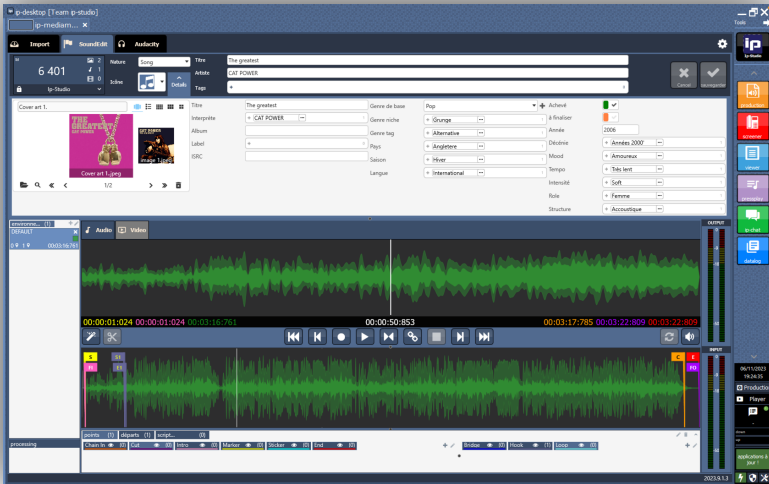




## KEY HIGHLIGHTS

To provide a clean, ultra-precise rendering of tracks, ip-mediamanager features a key highlights positioning interface, with colored flags fulfilling a multitude of functions required for the desired artistic rendering.

Once positioned, these key highlights open up an overview of the major intro keys, segues, loops...

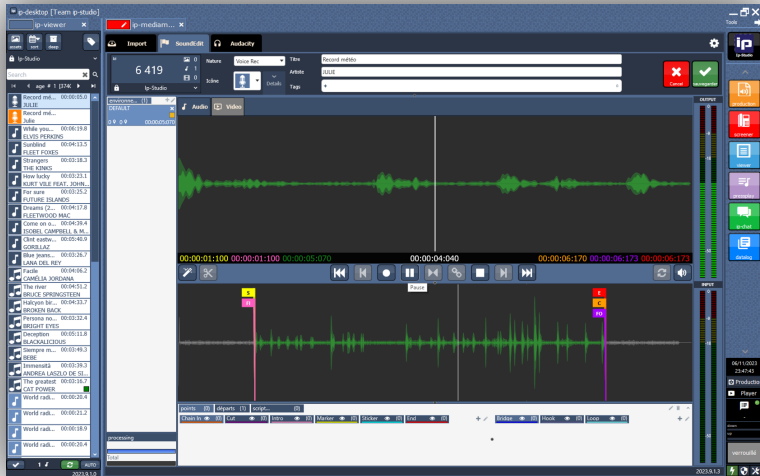




## NORMALISATION

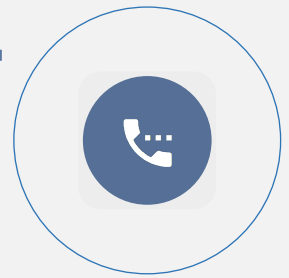
The ip-mediamanager module contributes to the normalization (peak or R128) of all integrated files controlled with mastery and precision.

Normalization can be the product of a video content audio track, which guarantees synchronization of content when broadcasting a video program slaved to a radio production.



# ip-mediamanager

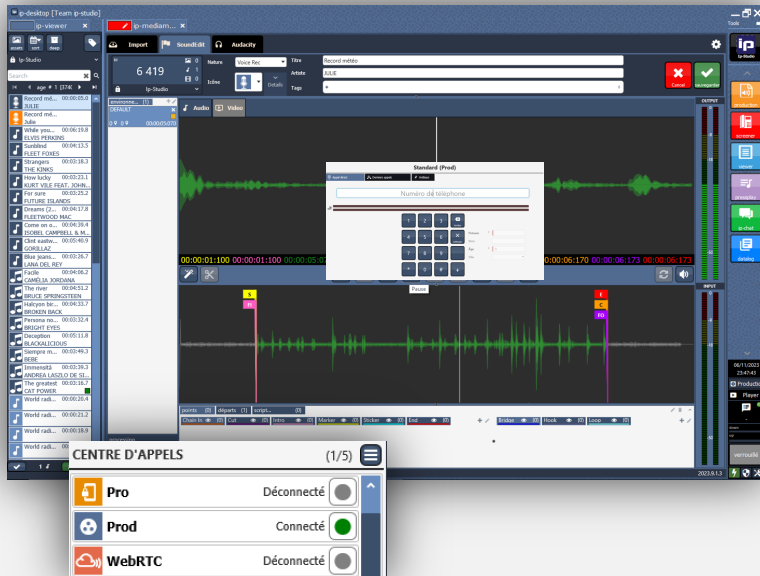
Centralized software business tool



## INSERT SIP

The SIP insert kit is connected to a microphone, making it possible to record sessions at any location from a simple contact management system if a call is to be dialed.

The WebPhone and OPUS options enable high-quality inserts.



# ip-mediamanager

Centralized software business tool



## PRODUCTION

The ip-mediamanager module integrates the Audacity editing tool in simple or advanced mode.

It enables precise multitrack editing, with projects and PADs saved and easily accessible in the ip-suite solution.

